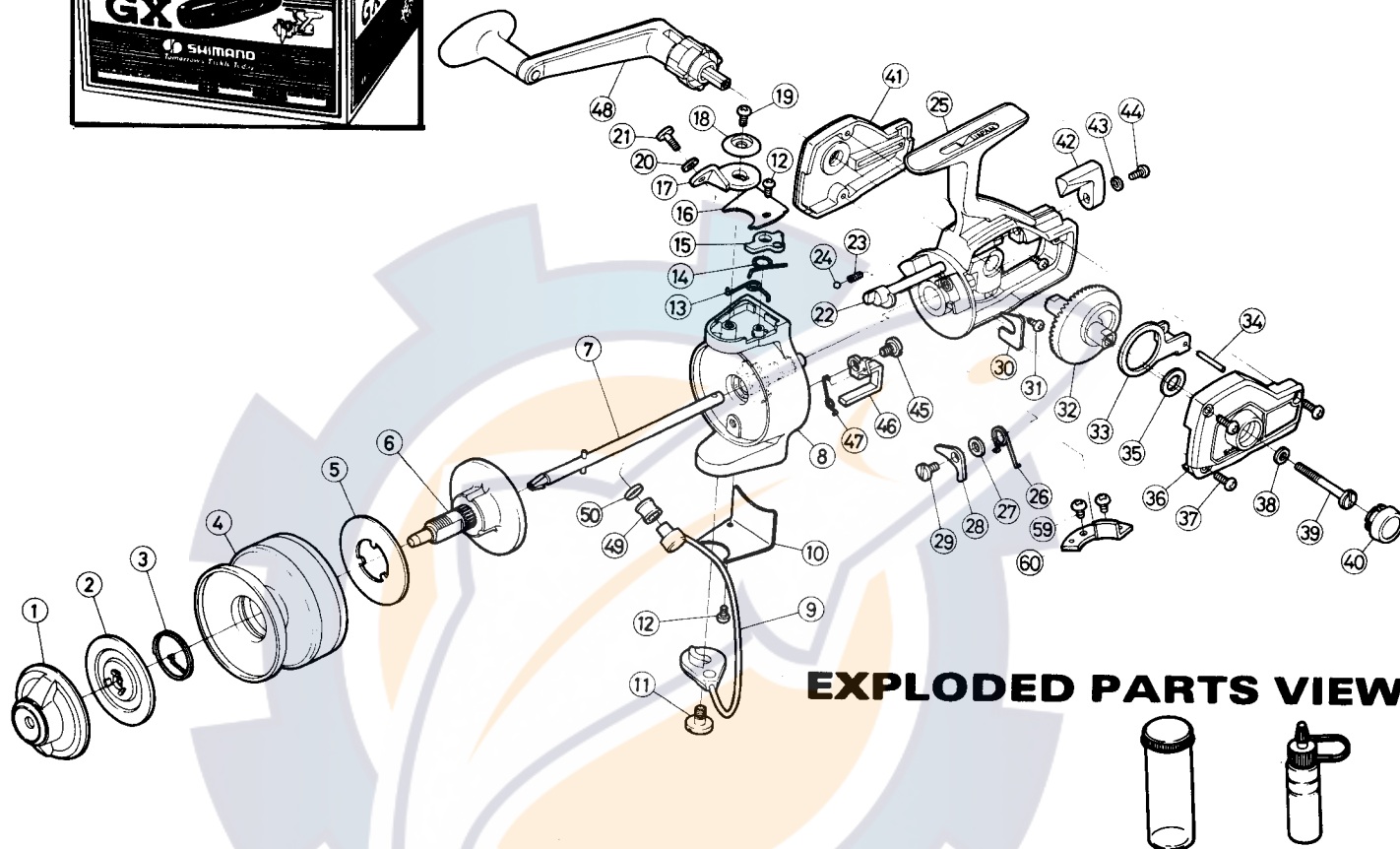
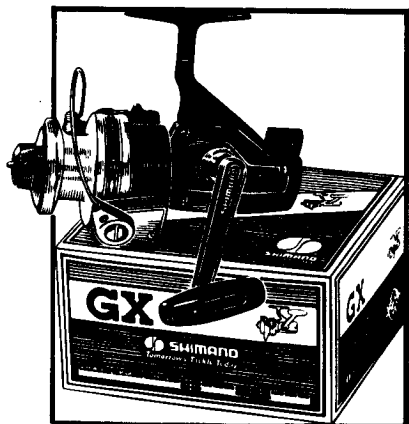




SHIMANO

REPAIR MANUAL NO. GX-200

Shimano American Corp., 205 Jefferson Road
Parsippany, New Jersey 07054



EXPLODED PARTS VIEW

PARTS LIST

| PART# | DESCRIPTION | PRICE | PART# | DESCRIPTION | PRICE | PART# | DESCRIPTION | PRICE |
|-------|---------------------|-------|-------|-------------------------|-------|-------|--------------------------|-------|
| 1 | Drag Adjusting Knob | 2.60 | 19 | Bail Mount Screw | .30 | 35 | Thrust Washer | .15 |
| 2 | Drag Disk | .55 | 20 | Bail Screw Washer | .15 | 36 | Left Side Plate | 1.75 |
| 3 | Click Spring | .25 | 21 | Bail Wire Screw | .70 | 37 | Left Side Plate Screw | .15 |
| 4 | Spool Shell | 11.30 | 22 | Anti Reverse Shaft | 1.50 | 38 | Handle Screw Washer | .15 |
| 5 | Base Drag Washer | .15 | 23 | Shaft Detent Spring | .15 | 39 | Handle Retainer Screw | 1.50 |
| 6 | Spool Spinkle | 3.30 | 24 | Shaft Detent Bail | .15 | 40 | Dust Cap | .30 |
| 7 | Axle | 2.30 | 25 | Housing | 8.75 | 41 | Right Side Plate | 1.75 |
| 8 | Rotor | 6.00 | 26 | Anti Reverse Dog Spring | .25 | 42 | Anti Reverse Lever | .30 |
| 9 | Bail Wire | 3.45 | 27 | Anti Reverse Dog Spacer | .15 | 43 | Lever Screw Lock Washer | .15 |
| 10 | Trip Lever Cover | .55 | 28 | Anti Reverse Dog | .75 | 44 | Anti Reverse Lever Screw | .15 |
| 11 | Bail Wire Screw | .55 | 29 | Anti Reverse Dog Screw | .40 | 45 | Trip Lever Screw | .25 |
| 12 | Cover Screw | .15 | 30 | Pinion Lock | .15 | 46 | Trip Lever | 1.60 |
| 13 | Bail Spring | .20 | 31 | Right Sideplate Screw | .15 | 47 | Trip Lever Spring | .25 |
| 14 | Fold Latch Spring | .30 | 32 | Drive Gear | 1.50 | 48 | Sa-Fold Handle | 9.50 |
| 15 | Bail Fold Latch | .90 | 33 | Oscillation Guide | .75 | 49 | Roller Line Guide | .60 |
| 16 | Bail Spring Cover | .35 | 34 | Oscillation Guide Pin | .15 | 50 | Line Guide Cap | .30 |
| 17 | Bail Mount | 1.25 | | | | 59 | Trip Cam Screw | .15 |
| 18 | Bail Mount Cover | .30 | | | | 60 | Trip Cam | .95 |

Prices and specifications subject to change without notice.